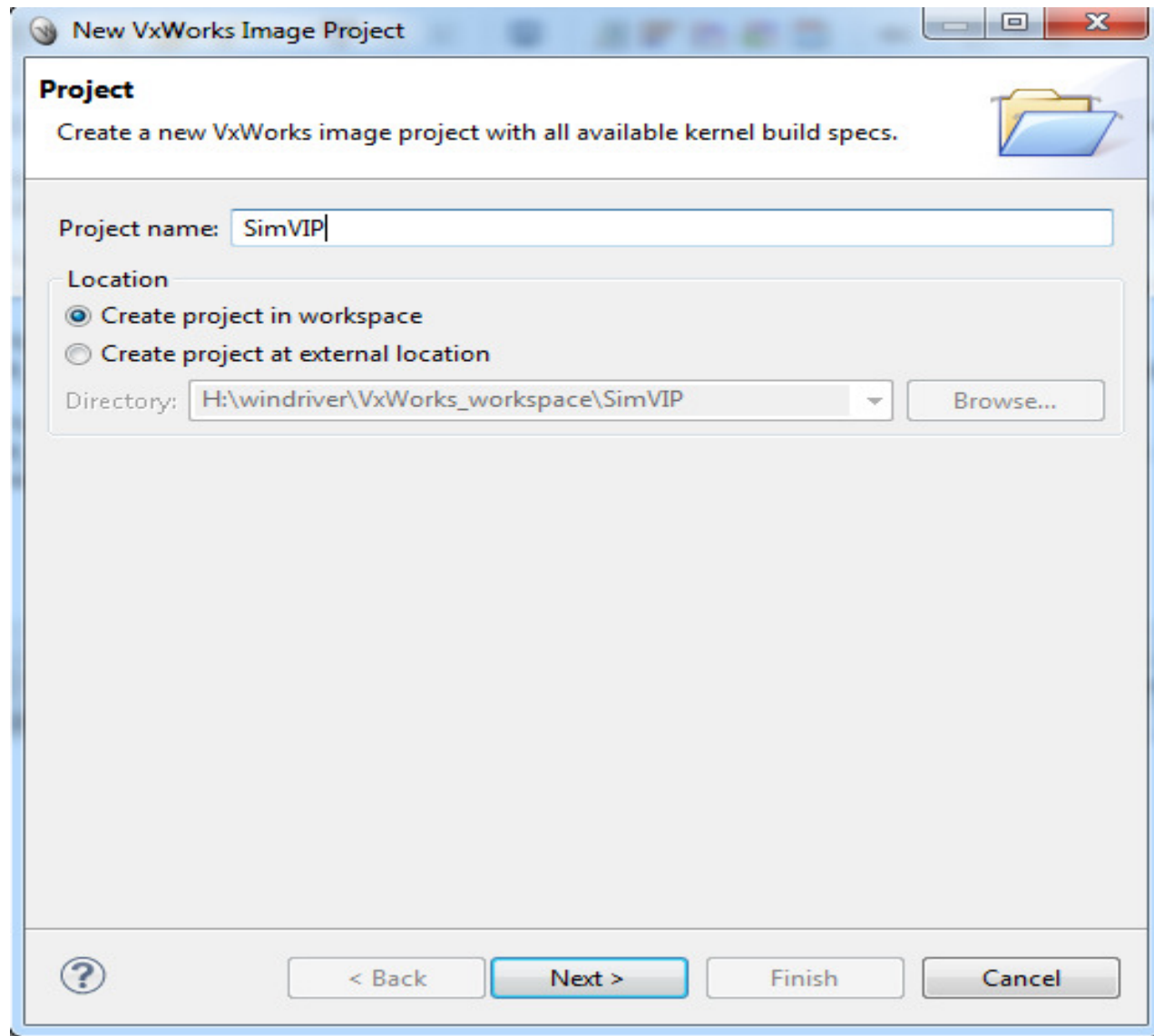
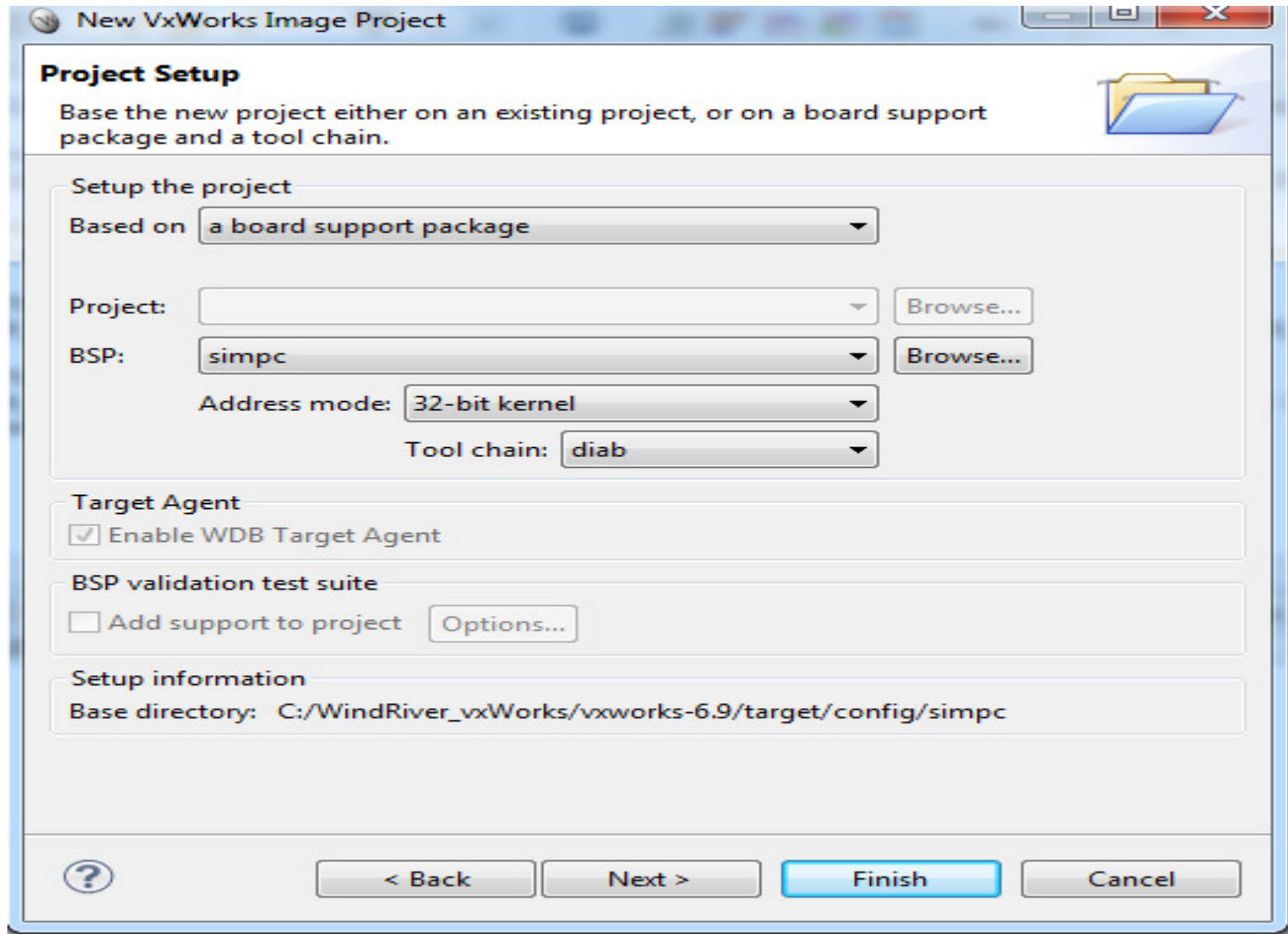


Creating a Simulator Kernel Image and Connecting to the Simulator

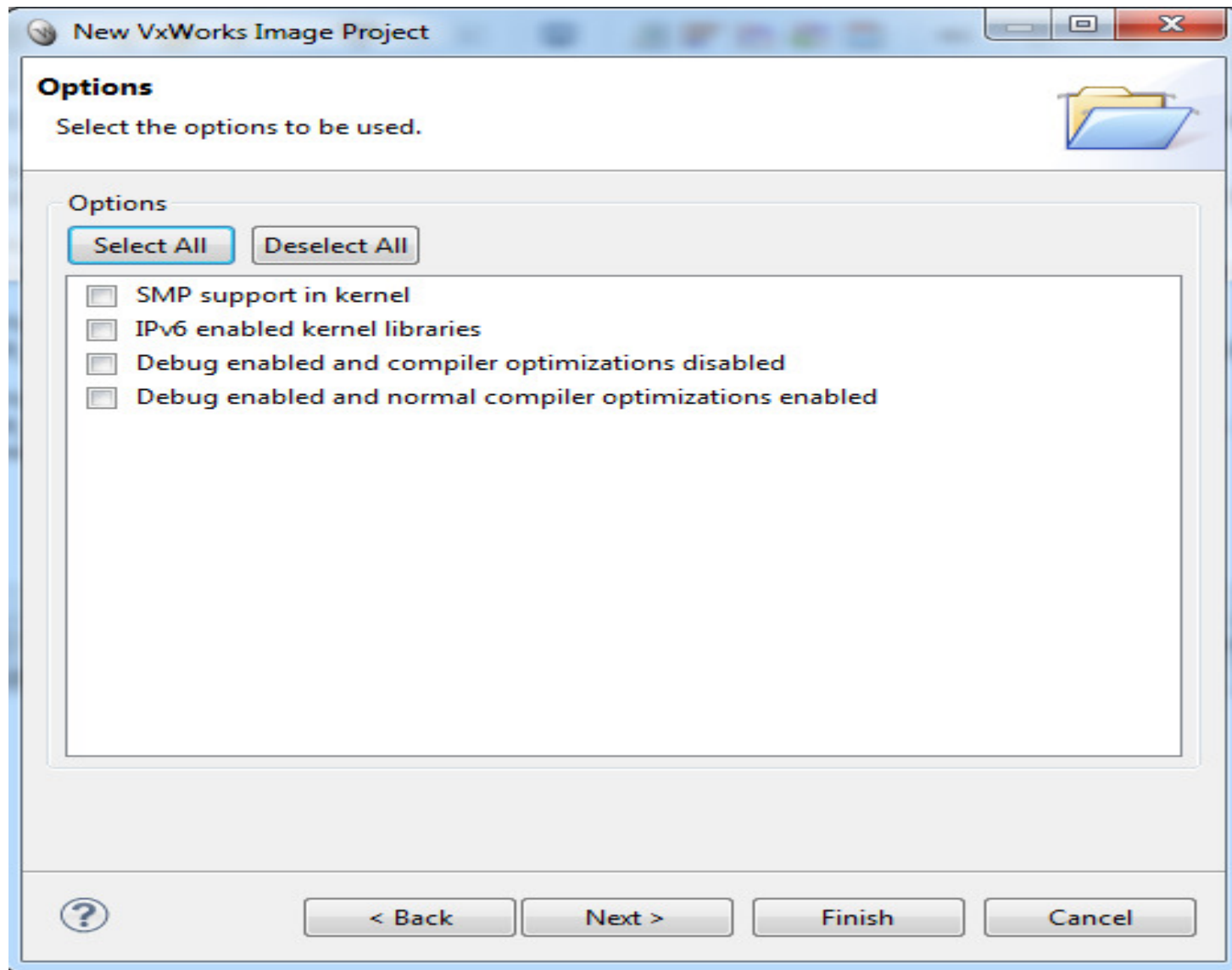


File->new->VxWorks Image Project

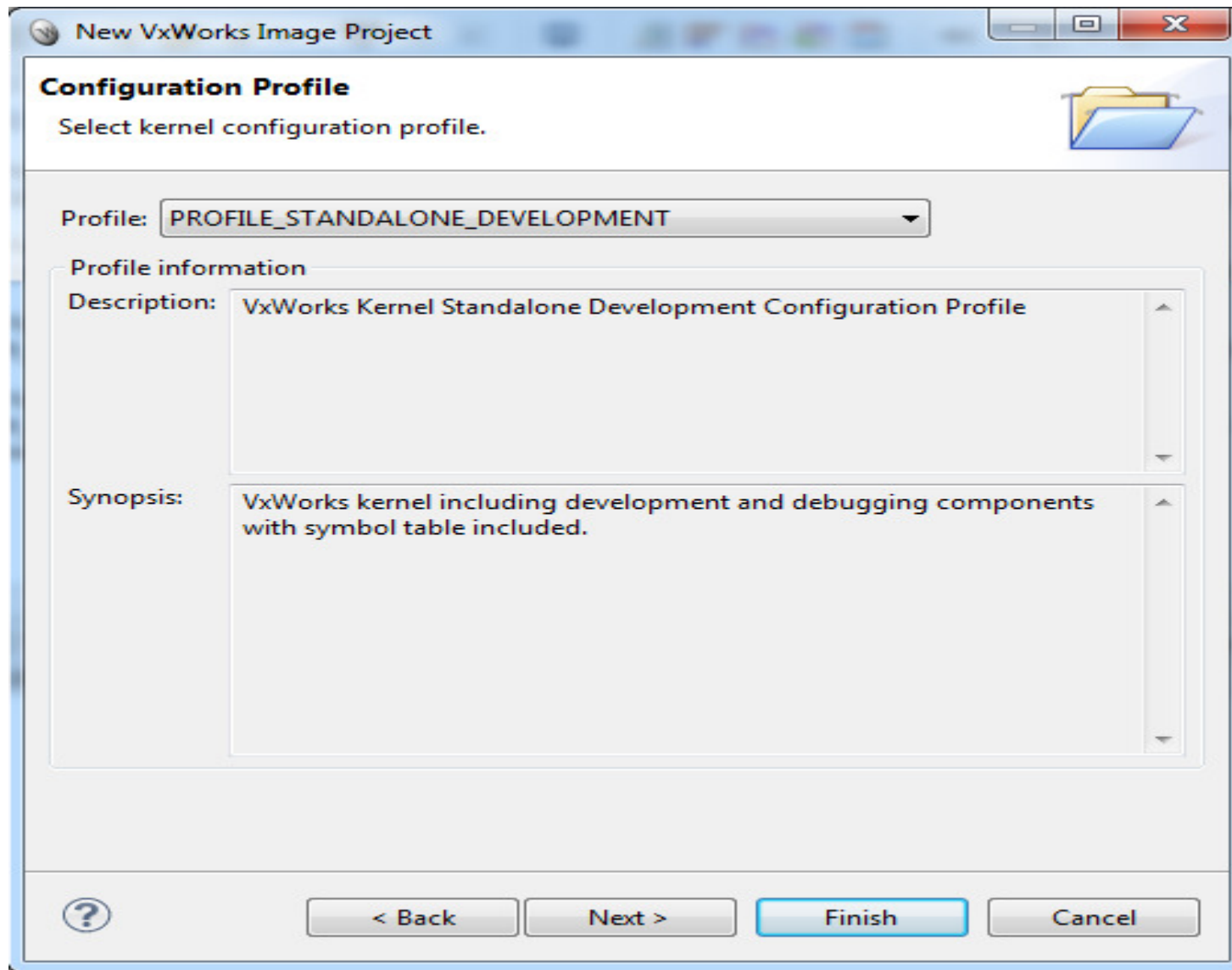
Make sure you are in the Advanced Device Development perspective



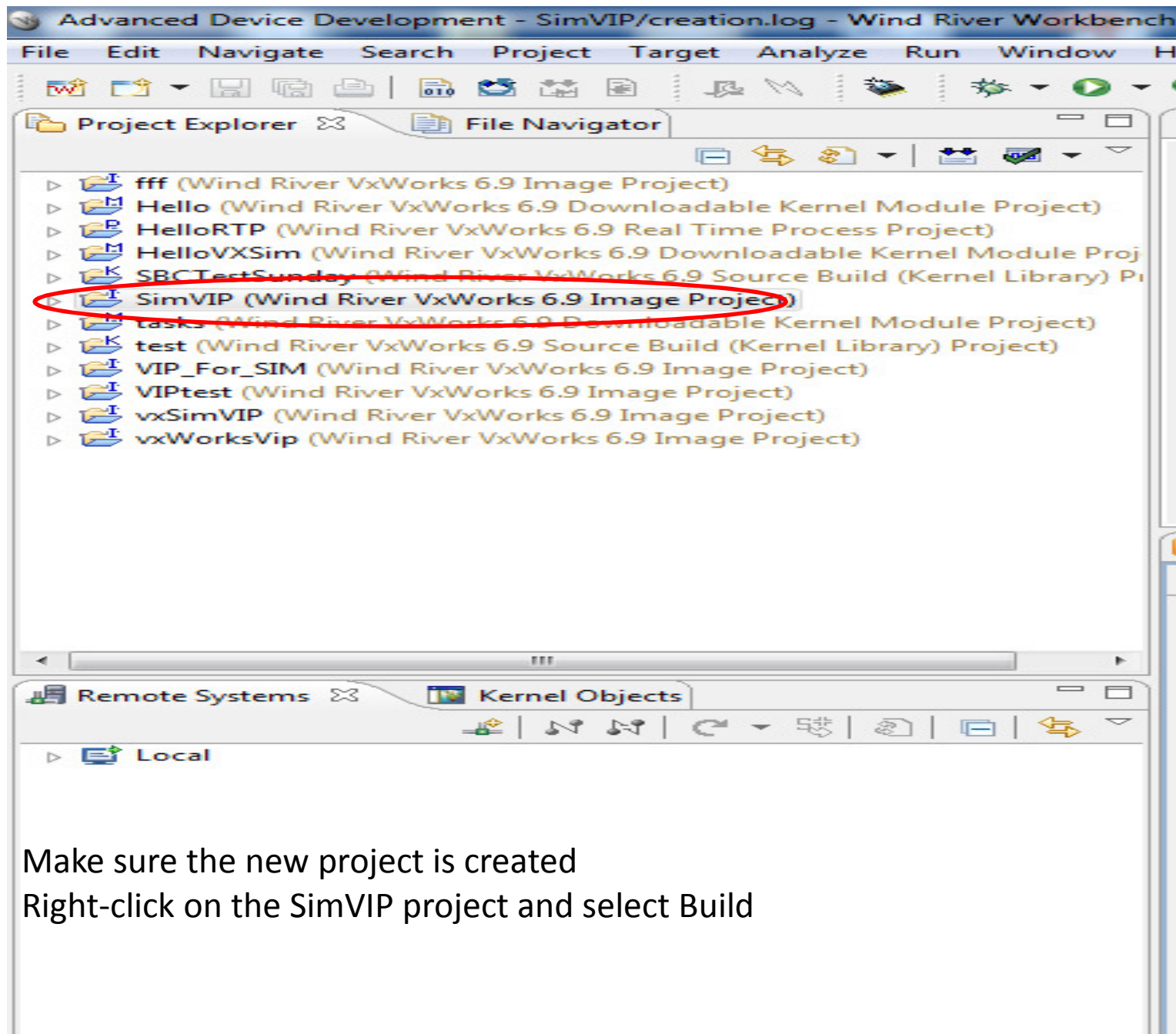
Select "simpc" as the BSP, 32-bit kernel, and diab as the tool chain



Leave all unselected



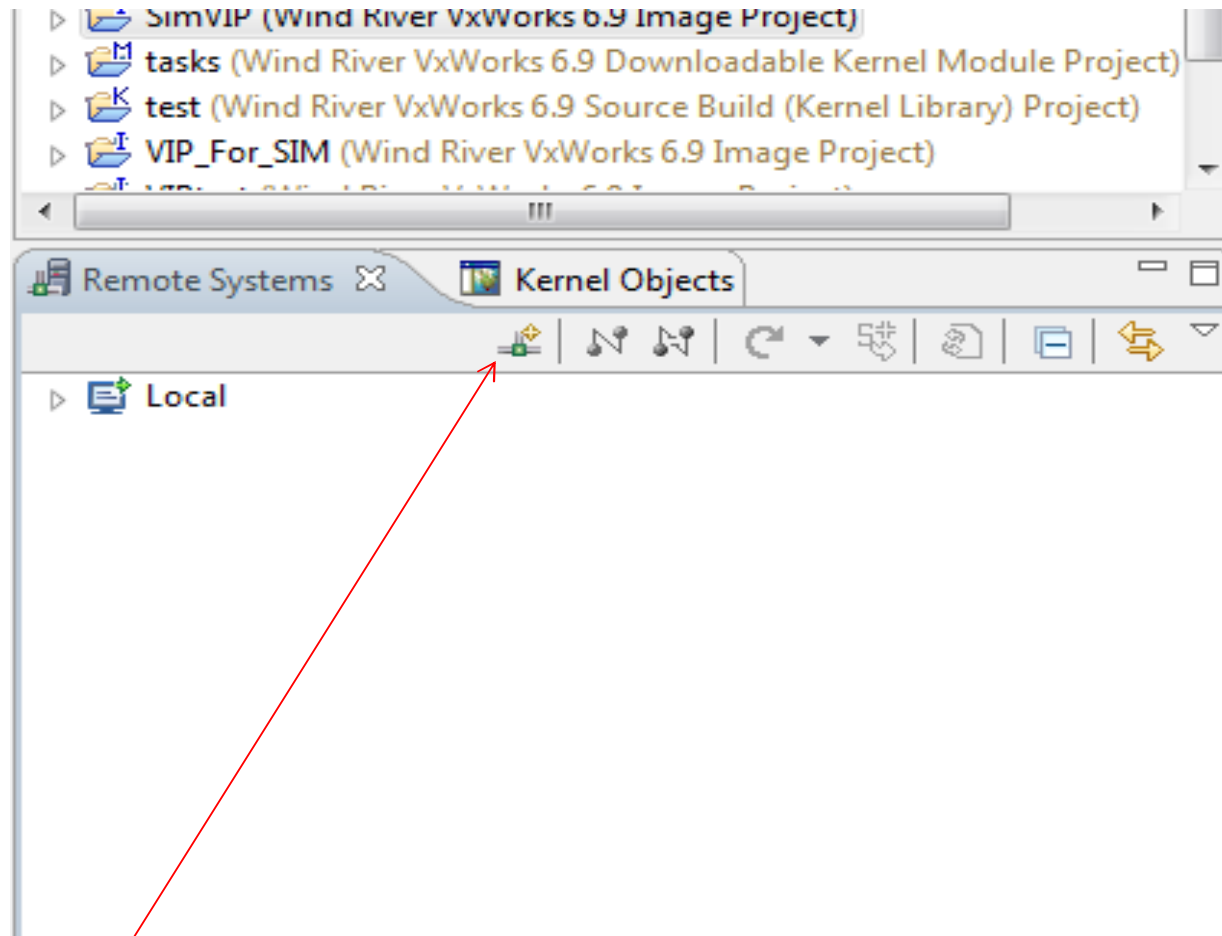
Select "standalone development" as the profile and click "Finish"



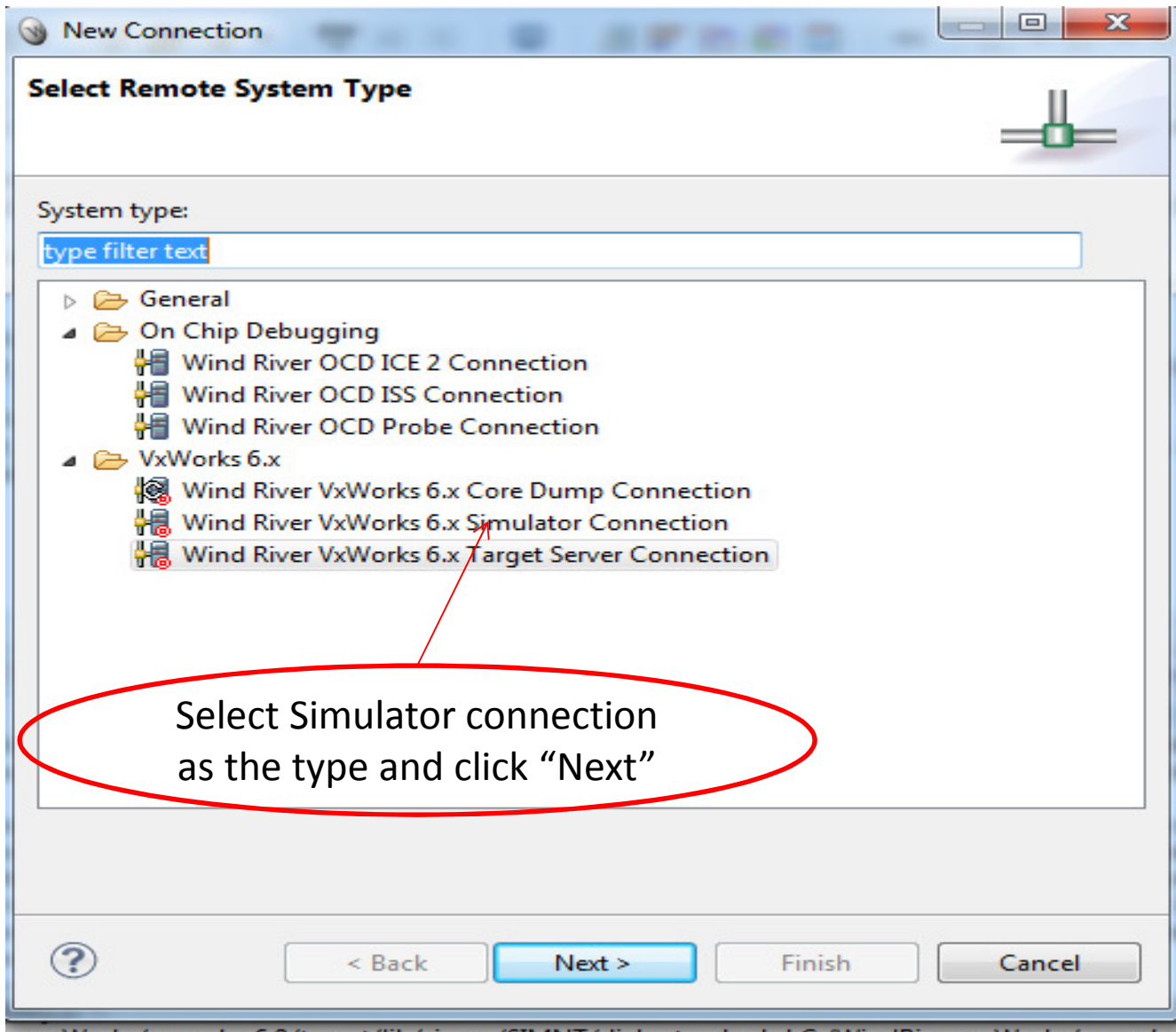
Make sure the new project is created

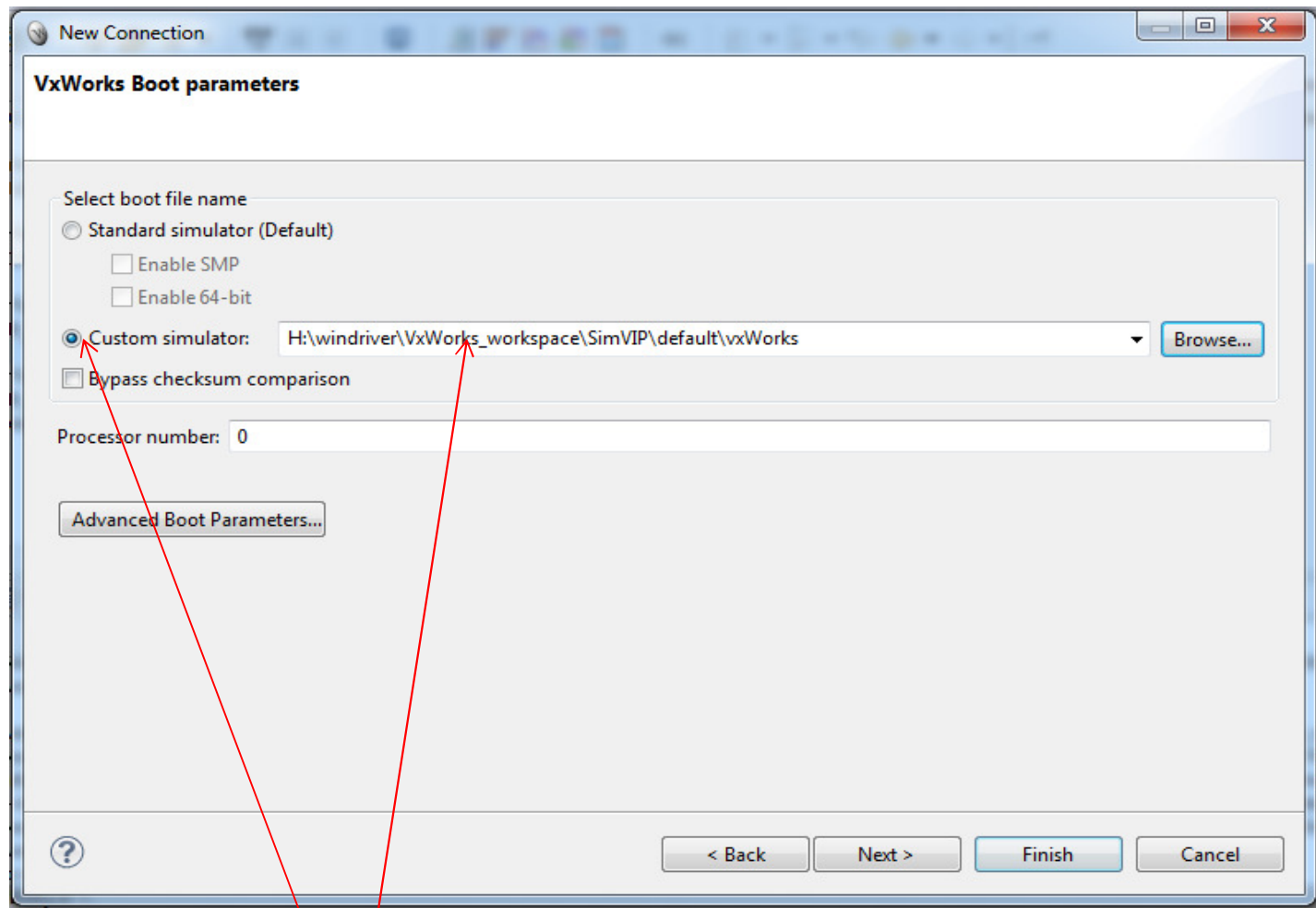
Right-click on the SimVIP project and select Build

- Now we should have a vxWorks kernel image that we can use with the simulator
- We next will try to connect to the simulator by creating a new “remote connection”



In the remote connection area, click on "define a new remote connection"





Select "custom simulator" and browse to the vxWorks image file that we just created as part of the VIP project and Click "finish"

The screenshot displays the Wind River VxWorks IDE interface. On the left, the 'Kernel Objects' pane shows a tree view under 'Local' > 'vxsim0 (Wind River VxWorks 6.9)' > 'Wind River Target Debugger (Wind River VxWorks 6.9)' > 'VxWorks 6.9:SIMNT - sys-000'. The 'Kernel Tasks' section is expanded, listing various tasks such as 'ipcom_syslogd:0x1042E660 [Pend]', 'ipcom_tickd:0x1054E880 [Pend]', 'tAioIoTask0:0x1040E408 [Pend]', 'tAioIoTask1:0x1040DFC8 [Pend]', 'tAioWait:0x1040AA98 [Pend]', 'tExcTask:0x101D6B40 [Pend]', 'tJobTask:0x103EEB00 [Pend]', 'tLogTask:0x103EFA70 [Pend]', 'tNet0:0x1040FB50 [Pend]', 'tNetConf:0x1046DDC0 [Pend]', 'tShell0:0x1054DCB0 [Pend]', 'tVxdbgTask:0x1089F0B0 [Pend]', and 'tWdbTask:0x1052F830 [Ready]'. Below this are 'Real Time Processes' and 'Wind River Launches'. On the right, the 'Target Consoles' pane shows the output of the target system, including the VxWorks logo, system information, and kernel status. The output includes: 'INCLUDE_ADR_SPACE_LIB INCLUDE_ADR_SPACE_LIB_ARCH INCLUDE_ANSI_ABORT INCLUDE_ANSI_ABS INCLUDE_ANSI_ATOF INCL Project created in : H:\windriver\VxWorks_workspace\VIP_SIM\VIP_SIM.wpj', 'vxsim0@CCS30608-143039', the VxWorks logo, 'Development System', 'VxWorks 6.9', 'KERNEL: WIND version 2.13', 'Copyright Wind River Systems, Inc., 1984-2013', 'CPU: Windows 6.1. Processor #0.', 'Memory Size: 0x1f00000 (31Mb). BSP version 6.9/0.', 'Created: Sep 9 2014 13:29:57', 'ED&R Policy Mode: Deployed', 'WDB Comm Type: WDB_COMM_PIPE', and 'WDB: Ready.'.

Expand the kernel tasks of the new connection and make sure you see a list of tasks that are currently running

Target console should show the VXWorks graphic